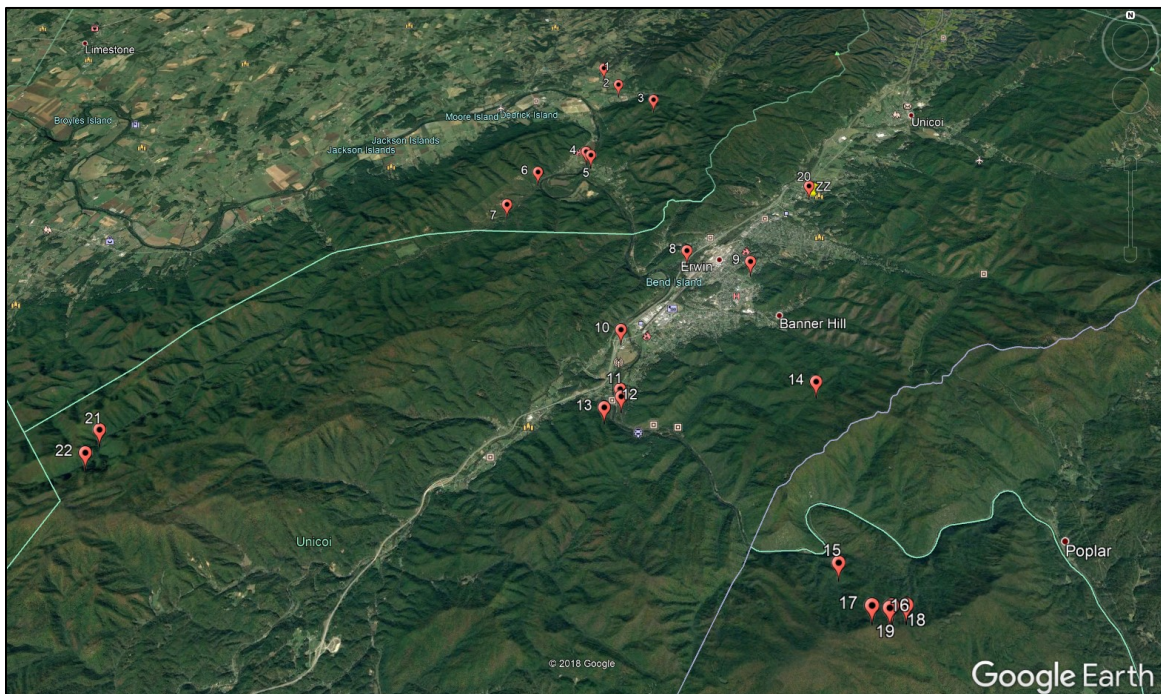




I love finding an interesting place and writing a fictional event into it. It's like a geocached gift that you leave behind for others.

I imagine readers going to find the locations, maybe sitting down and reading the scenes. Stephen King described writing as a form of telepathy, where the written words overcome time and space and travel between the mind of author and reader.

I sit, writing this, days or years in your past. When you visit the places in the books, they will be the same, just as they were when I was there, and perhaps just as our great-grandfathers might have seen them.



Regional points of interest

THE LAZARUS SPEAR

1. Location: [104 Cherry Grove Rd, Jonesborough, TN 37659](#), Story conception

Activity: *We were sitting in Cherry Grove Baptist Church listening to a sermon when the idea of a spear that represented the Holy Spirit came to me. The church and pastor are included in the book.*

FLIGHTPACK

2. Location: [36.205242, -82.444357](#), Obstacle course

Activity: *Ethan and Leo hide near a remote police training area and Leo sleeps under the stars atop a large tower as Brother tells him about the Known. This outdoor training center was the inspiration for those scenes.*

THE LAZARUS SPEAR

3. Location: [36.19727898111763, -82.4331983551383](#), A bear follows Hogan (and Tom)

Activity: *A bear trailed me as I hiked through this area. This was the inspiration for a similar scene in THE LAZARUS SPEAR.*

FLIGHTPACK

4. Location: [36.178690, -82.455156](#), Taylor Bridge

Activity: *Ethan unloads the full extent of his entropy powers on Taylor Bridge.*

FLIGHTPACK

5. Location: [36.177326, -82.453681](#), Taylor Bridge

Activity: *Ethan drops a highway cone in the road to prevent anyone driving over the destroyed Taylor Bridge.*

FLIGHTSUIT, FLIGHTPACK

6. Location: [36.170994, -82.470000](#), Bumpas Cove, Tennessee

Activity: *Leo, discoverer of the flightsuit, lives in Bumpas Cove, Tennessee.*

FLIGHTSUIT, FLIGHTPACK

7. **Location:** [36.159591, -82.478878](#), Trail to abandoned iron mines.

Activity: *The trail entrances to the abandoned iron mines are located here.*

THE LAZARUS SPEAR, FLIGHTSPAWN

8. **Location:** [36.144599, -82.426222](#), The Erwin Linear Trail & playground

Activity: *The Erwin Linear Trail is a scene of misfortune in THE LAZARUS SPEAR and a recurring scene where destinies are revealed in FLIGHTSPAWN.*

FLIGHTSPAWN

9. **Location:** [36.140983, -82.408398](#), Jon's apartment

Activity: *This was inspiration for Jon's apartment.*

FLIGHTSPAWN

10. **Location:** [36.121140, -82.445865](#), Hotel ("Alamo")

Activity: *The hotel and convenience store in this location are inspiration for the "Alamo" chapters in the book.*

THE LAZARUS SPEAR, FLIGHTSPAWN

11. **Location:** [36.105184, -82.446528](#), Continuity between books

Activity: *In THE LAZARUS SPEAR, Hogan observes a hard-looking suspicious man at the Chestoa parking area on his way to revisit the cave where he found the spear. In FLIGHTSTREAM, the tough character is revealed to have been Hack.*

FLIGHTSPAWN

12. **Location:** [36.103277, -82.446300](#), Escaping hikers cross the railroad tracks

Activity: *The escaping hikers leave the tree cover to cross these tracks and look back at the "black river" in the sky.*

THE LAZARUS SPEAR

13. Location: [36.099294, -82.450776](#), Location of second hidden commemorative spear

Activity: *This is the location where I hid the second commemorative Lazarus Spear on July 7, 2017.*

Additional: Spear contest ([link](#))

FLIGHTSPAWN

14. Location: [36.10432, -82.39684](#), Appalachian Trail: Curley Maple Gap Shelter

Activity: *This is an important and exciting scene from the book. I hope you will hike there, sit on the heavy wooden bench and read Chapters 210-212 and 222-235.*

FLIGHTSUIT, FLIGHTPACK, FLIGHTSPAWN

15. Location: [36.064840, -82.398059](#), The Lost Cove

Activity: *This is the Lost Cove. It is a fascinating place and the inspiration for the iron mining village in FLIGHTSUIT.*

Additional: Collected Lost Cove background ([link](#))

FLIGHTSPAWN

16. Location: [36.0541549, -82.39022889](#), Black pond

Activity: *This creepy black pond is such an eerie surprise when you see it that I had to include it in the book. Chapters 206-208 and 243.*

Additional: Excellent map of Flattop ([link](#))

FLIGHTSPAWN

17. Location: [36.054460, -82.394096](#), Flattop Mountain, the lair

Activity: *Flattop Mountain is the creatures' lair.*

Additional: Excellent map of Flattop ([link](#))

FLIGHTSPAWN

18. Location: [36.0550086, -82.38624382](#), Great Lost Cove Overlook

Activity: *Ben and Shellie trekked near this beautiful overlook of the Lost Cove. Look for the stunted little oak.*

FLIGHTSPAWN

19. Location: [36.054569, -82.389647](#), Grassy field

Activity: *This grassy field is described in the book.*

Additional: Excellent map of Flattop ([link](#))

FLIGHTSPAWN

Location: Awaiting Coordinates, Devil's Creek Trail

Activity: *The Devil's Creek Trail is described in the book.*

Additional: Excellent description of the trail and photos ([link](#))

FLIGHTSPAWN

20. Location: [36.165756, -82.387606](#), Erwin Fish Hatchery

Activity: *The wrong-faces descend on the fish hatchery for a great first encounter scene.*

THE LAZARUS SPEAR

21. Location: [36.09339014, -82.57597697](#), Cave inspiration

Activity: *The oddly-stacked layers of this geologic formation are the inspiration for the cave where Hogan found the Lazarus Spear.*

THE LAZARUS SPEAR

22. Location: [36.08656219, -82.57582251](#), Buckeye Falls

Activity: *Although not specifically referenced in any of my books, these falls were my destination when I discovered the caves that became those referenced in THE LAZARUS SPEAR.*

FLIGHTSPAWN

Location: [35.981792, -82.546173](#), I-26 Attack

Activity: *This is one of my favorite scenes from the book. Stuck in a long line of traffic with mountainous terrain on both sides, with flying demons dropping out of the sky and crawling ones moving up car by car toward you.*

THE LAZARUS SPEAR

Location: [35.963876, -82.585990](#), Location of first hidden commemorative spear

Activity: *This is the location where I hid the first commemorative Lazarus Spear on June 17, 2017.*

Additional: Spear contest ([link](#))

FLIGHTSPAWN

Location: [35.964276, -82.587149](#), Appalachian Trail: Hogback Ridge Shelter

Activity: *Hack is south of the Hogback Ridge Shelter when his game camera reveals a nasty surprise.*

FLIGHTSPAWN

Location: [35.920788, -82.564333](#), Harvey's cabin

Activity: *I drive this route every day to work and every time I pass this overlook, my eye, and imagination, is drawn to the small house tucked up close to the treeline between the ridges. I love trying to imagine what the world looks like from that cabin.*

THE LAZARUS SPEAR

Location: [35.729729, -82.554200](#), Roadside flowers

Activity: *The Highway Department plants various flowers along the highway here. People pull off to take photos. Hogan and Shellie pose in a field of red poppies here.*

Other points of interest

Location description: Arizona

FLIGHTPACK

Location: [36.052836, -112.083697](#), South Kaibab Trailhead, Grand Canyon

Activity: *Leo descends into the Grand Canyon.*

Additional: South Kaibab Trailhead ([link](#))

Location description: Colorado

LIFEFLASH

Location: [38.741263, -109.505450](#), Delicate Arch, Moab, Utah

Activity: *Story conceived on this spot. We were hiking to the Delicate Arch, in Moab, Utah when I came up with the concept for LIFEFLASH. The trail was over bare rock faces and steep. Two guys in their twenties came up behind us and wanted to pass. I overheard them talking about slow people, so when they passed close by on the narrow trail, I stared hard at them. I came up with the idea of a man whose stare was a death-sentence right there and shared the idea with Marfie on the spot.*

LIFEFLASH

Location: [431 Harrison Ave, Leadville, CO 80461](#), Leadville, Colorado

Activity: *Marfie and I visited the highest elevation town in Colorado. The antique store there was the model for the antique store in LIFEFLASH.*

Additional: Antique Store in Leadville, Colorado ([link](#))

LIFEFLASH

Location: [37.179382, -104.492416](#), Trinidad, Colorado

Activity: *I searched the web for a town with a small, but not too small, population for the town where Jon would come out of retirement. I found Trinidad, Colorado and set this as the location. I described the view of the Sangre de Cristo Mountains from Jon's cabin and the antique store. We visited Trinidad on a trip in 2015.*

Location description: Nevada

FLIGHTPACK

Location: [37.221890, -115.818425](#), Area 51

Activity: *Leo battles A-10 jets.*

Additional: Interesting Area 51 photographs ([link](#))

FLIGHTPACK

Location: [37.242130, -115.818802](#), Area 51

Activity: *A51 Baseball field where Leo battles Humvees.*

Additional: Interesting Area 51 photographs ([link](#))

FLIGHTPACK

Location: [37.240923, -115.815704](#), Area 51

Activity: *Leo battles the Apache helicopters near these Area 51 dorms.*

Additional: Interesting Area 51 photographs ([link](#))

FLIGHTPACK

Location: [9631 Old Mill Rd, Alamo, NV 89001](#), Little A'Le'Inn

Activity: *Marfie and I stopped at this famous spot during a trip in 2014.*

FLIGHTPACK

Location: [37.174702, -115.837562](#), S4 Site

Activity: *I used the interesting history of the S4 site as basis for a secret government structure.*

Additional: Bob Lazar's s4 Claims ([video link](#))

FLIGHTPACK

Location: [37.34276, -115.3590](#), Tikaboo Peak overlook

Activity: *Leo plans the attack on Area 51 near the Tikaboo Peak overlook. This is the nearest remaining overlook of Area 51 that is public-accessible.*

Additional: Topographical map ([Interesting Topo Map](#))

Location description: Utah

LIFEFLASH

Location: [38.736522, -109.519692](#), The Wolfe Ranch, Arches National Park

Activity: *This remote cabin in the Arches National Park was the inspiration for Jon Falvo's desert retreat.*

Additional: The Wolfe Ranch, Arches National Park ([link](#))

Location description: Vienna, Austria

THE LAZARUS SPEAR

Location: [Vienna, Austria](#), Vienna, Austria

Activity: *This is the location of the most famous of the four holy relics known as the "Holy Lance" or the "Spear of Destiny".*

Additional: Read the Wiki ([link](#))

Location description: Washington, DC

THE LAZARUS SPEAR

Location: [38.906439, -77.041963](#), The Shake Shack, Dupont Circle

Activity: *This is where Hogan confronts the President with the Lazarus Spear. I chose this location because in 2014, President Obama ate there with Russian President Medvedev.*

Additional: Read the article ([link](#))